

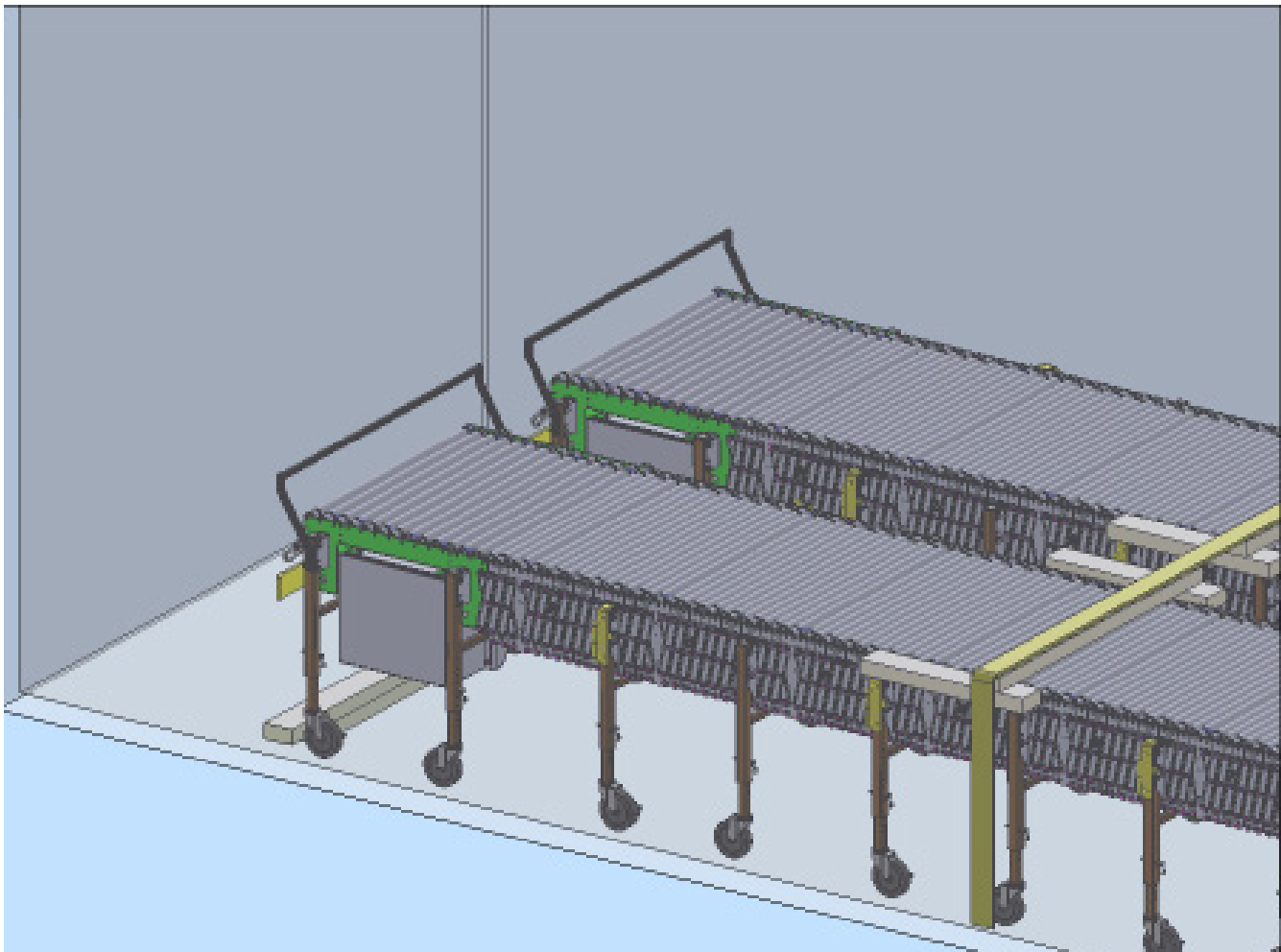
POWERED FLEX CONVEYOR SHIPPING REQUIREMENTS



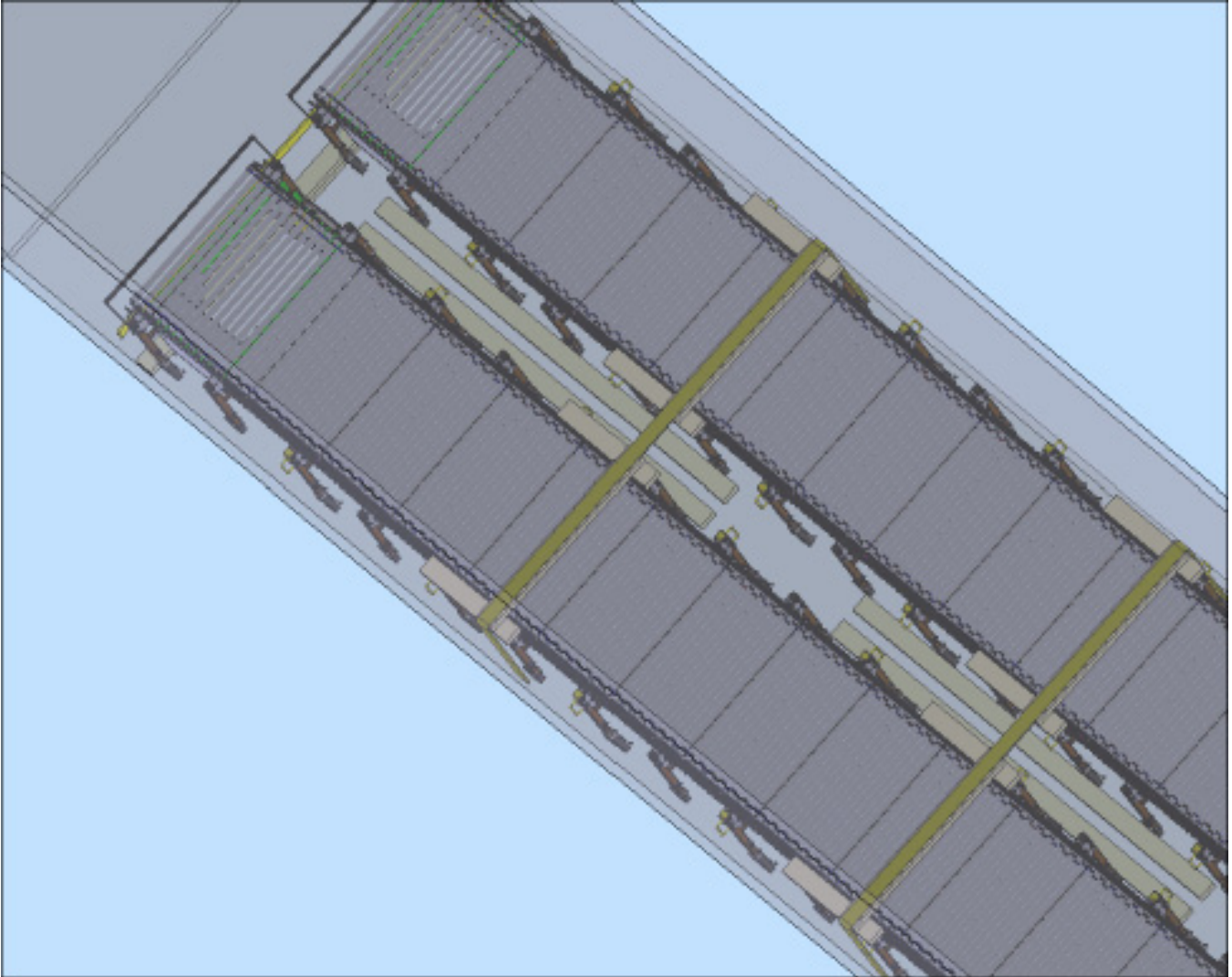
All CXL Flex Conveyor MUST be loaded and secured in the manner outlined below, before being allowed to leave our facility.

CXL will supply all required dunnage, and the carrier is responsible for straps and strapping the equipment. Customer/recipient is responsible for the removal of the dunnage and straps and the unloading of all equipment.

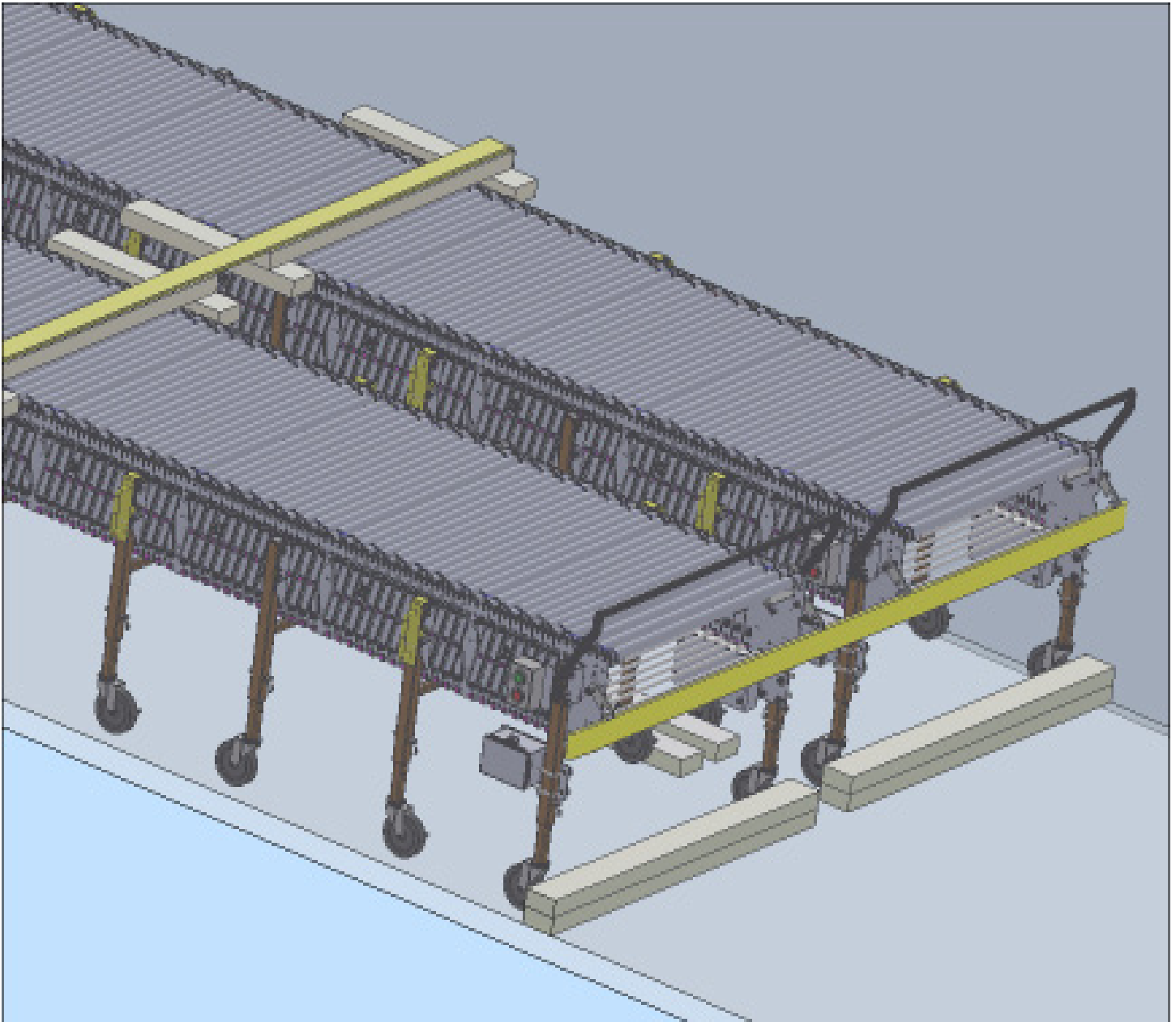
- Two 8' 2x4's to be fastened down to the floor of the trailer at the bulkhead, spaced away about 2'-3' from the front.
- One strap across the front of the conveyors at the frame, flush with the end of the conveyor to prevent forward movement



- All casters to be locked and 8' 2x4's fastened to the trailer bed along the casters as shown below



- One strap across the end of the conveyor at the frame, flush with the back end of the conveyor to prevent backward movement
- Four 4' 2x4's fastened to the floor of the trailer, holding the load in place with the casters. Casters should be rotated against the 2x4 so they cannot rotate free with vibration



- Two to four straps (depending on conveyor length) to be placed over the conveyors evenly spaced along the length of the conveyor and at the leg supports only, using the H shaped braces (see below pics)

